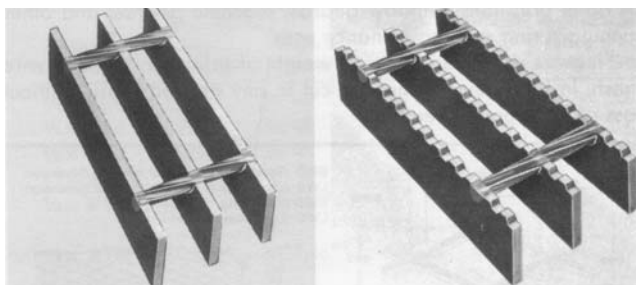


# OPEN STEEL FLOOR GRATING

Conforms to Specification RR-G-661



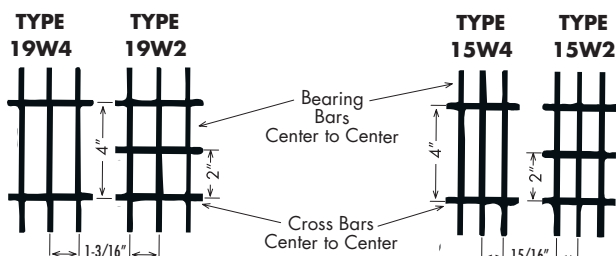
Smooth-surface grating

Serrated-surface safety grating

Grating available in Carbon Steel, Aluminum, Stainless, & Fiberglass

## STANDARD MESH TYPES

## CLOSE MESH TYPES



### Lbs. Per Sq. Ft.

Bearing Bars	Type 19W4	Type 19W2	Type 15W4	Type 15W2
3/4 x 1/8	4.0	4.6	4.8	5.5
3/4 x 3/16	5.6	6.3	6.9	7.5
1 x 1/8	5.1	5.7	6.2	6.9
1 x 3/16	7.3	8.0	9.0	9.6
1 1/4 x 1/8	6.1	6.8	7.5	8.2
1 1/4 x 3/16	8.9	9.6	11.1	11.7
1 1/2 x 1/8	7.3	7.9	9.0	9.6
1 1/2 x 3/16	10.6	11.2	13.1	13.8
1 3/4 x 3/16	12.2	12.9	15.2	15.8
2 x 3/16	13.9	14.5	17.3	17.9
2 1/4 x 3/16	15.4	16.1	19.2	19.9
2 1/2 x 3/16	17.1	17.7	21.3	22.0

Stock Sizes	
Panel Width in Inches	Panel Length in Inches
24, 36	240, 288

Other bearing bar sizes and spacings are available.  
All grating can be cut to your specifications.

### When ordering GRATING, specify:

- Type of GRATING
- Size of BEARING BARS (Depth & Width)
- Span (direction of bearing bars)
- Dimensions of area
- Unpainted, Painted or Galvanized, Smooth or Serrated
- Special shapes can be furnished with, or without, edge banding.

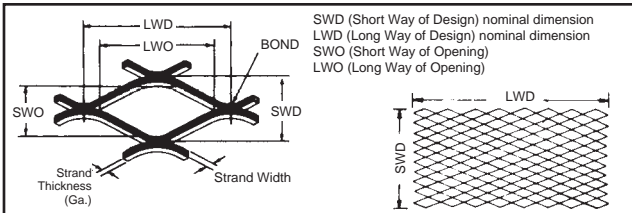
### When ordering STAIR TREADS, also specify:

- Width & Length
- Type of Nosing (Checker Plate or Cast Iron Abrasive)
- Punching in side plates or standardized dimensions may be altered to suit special conditions.

## EXPANDED METAL

Expanded Metal may be used for many industrial purposes such as open partitions, window guards, machine guards, and other manufacturing and maintenance uses.

It is more rigid than an equal weight of solid steel plate or wire mesh. In fabricating, it may be cut to any desired shape without loss of its original strength.



### EXPANDED STEEL STANDARD Carbon (MIL-M-17194 Type I Class 1, ASTM F 1267 Type I Class 1) and Stainless Steels\*\* (MIL-M-17194 Type I Class 3)

Style Designation*	Approx. Thickness	Width in Inches	Length in Inches	Est. Lbs. Per Sq. Ft.	Approx. Size of Opening in Inches SWO LWO
1/4 x #20	(.036)	36, 48	96	.86	.140 x .718
1/4 x #18	(.048)	48	96	1.14	.145 x .718
1/2 x #18	(.048)	48	96	.70	.438 x .938
1/2 x #16	(.060)	48	96	.86	.375 x .938
		48	120	.86	.375 x .938
1/2 x #13	(.092)	48	96	1.47	.312 x .938
3/4 x #16	(.060)	48, 72	96	.54	.813 x 1.750
3/4 x #13	(.092)	48, 72	96	.80	.750 x 1.688
		48	120	.80	.750 x 1.688
3/4 x #10	(.092)	48	96	1.20	.750 x 1.625
3/4 x #9	(.134)	48, 72	96	1.80	.688 x 1.562
		48	120	1.80	.688 x 1.562
1 1/2 x #13	(.092)	48, 72	96	.60	1.188 x 2.500
		72	120	.60	1.188 x 2.500
1 1/2 x #9	(.134)	72	96	1.20	1.125 x 2.375
		48, 72	120	1.20	1.125 x 2.375
2 x #9	(.134)	48	96	.90	1.563 x 3.375

\* The first number represents the nominal width of diamond in inches measured from center to center of bonds; the second number usually represents the approximate gage of sheet or plate before expanding. Sheets of special size can be furnished.

\*\* Stainless Steel weights are slightly higher

### EXPANDED STEEL GRATING STANDARD

Style Designation	Width in Inches	Length in Inches	Est. Lbs. Per Sq. Ft.	Approx. Size of Opening in Inches
<b>3.0 Lb. Grating</b>	72	120	3.00	1 <sup>5</sup> / <sub>16</sub> x 3 <sup>7</sup> / <sub>16</sub>
<b>3.14 Lb. Grating</b>	48	120	3.14	1 <sup>5</sup> / <sub>8</sub> x 4 <sup>7</sup> / <sub>8</sub>
<b>4.0 Lb. Grating</b>	48	96	4.00	1 <sup>5</sup> / <sub>16</sub> x 3 <sup>7</sup> / <sub>16</sub>
<b>4.27 Lb. Grating</b>	48, 72	96	4.27	1 x 2 <sup>7</sup> / <sub>8</sub>
<b>6.25 Lb. Grating</b>	48	96	6.25	1 <sup>3</sup> / <sub>16</sub> x 3 <sup>3</sup> / <sub>8</sub>

**EXPANDED STEEL FLATTENED**  
**Carbon (MIL-M-17194 Type II Class 1,**  
**ASTM F 1267 Type II Class 1) and**  
**Stainless Steel Type 304\*\* (MIL-M-17194 Type II Class 3)**

Style Designation*	Approx. Thk. After Flattening	Width in Inches	Length in Inches	Est. Lbs. Per Sq. Ft.	Approx. Size of Opening in Inches SWO LWO
1/4 x #20	(.030)	48 . . . . .	96 . . . . .	.82 . . . . .	.110 x .715
1/4 x #18	(.040)	36, 48	96	1.08	.118 x .715
1/2 x #20	(.029)	48	96	.40	.375 x 1.000
1/2 x #18	(.039)	36, 48**	96 . . . . .	.66 . . . . .	.312 x 1.000
		48	120	.66	.312 x 1.000
1/2 x #16	(.050)	36, 48**	96	.82	.312 x 1.000
1/2 x #13	(.070)	48**	96	1.40	.265 x 1.000
		48	120	1.40	.265 x 1.000
3/4 x #18	(.040)	48†	96	.46	.750 x 1.812
3/4 x #16	(.048)	36**, 48**	96 . . . . .	.51 . . . . .	.750 x 1.750
		48	120	.51	.750 x 1.750
3/4 x #14	(.061)	48	96	.63	.688 x 1.813
3/4 x #13	(.070)	48**	96	.75	.688 x 1.781
3/4 x #9	(.120)	36, 48**	96	1.71	.563 x 1.688
		48	120	1.71	.563 x 1.688
1 1/2 x #16	(.048)	48† . . . . .	96 . . . . .	.38 . . . . .	1.062 x 2.750
1 1/2 x #13	(.070)	48**	96	.57	1.062 x 2.750
1 1/2 x #9	(.110)	36, 48**	96	1.14	1.000 x 2.563
		48	120	1.14	1.000 x 2.563

\* The first number represents the nominal width of diamond in inches measured from center to center of bonds; the second number usually represents the approximate original gage before expanding. Sheets of special size can be furnished.

\*\* Also available in Stainless Steel. Weights will be slightly higher.

† Stainless Steel only. Weights will be slightly higher.

**EXPANDED ALUMINUM STANDARD**  
**3003-H14**

Style Designation	Width in Inches	Length in Inches	Est. Lbs. Per Sq. Ft.	Approx. Size of Opening in Inches SWO LWO
1/2 - .051	36, 48	96	.27	.375 x .937
1/2 - .081	48	96	.44	.375 x .937
3/4 - .051 . . . . .	48 . . . . .	96 . . . . .	.17	.812 x 1.75
3/4 - .081 Heavy	48	96	.41	.750 x 1.68
3/4 - .125	48	96	.65	.687 x 1.68

**EXPANDED ALUMINUM FLATTENED**  
**3003-H14**

Style Designation	Width in Inches	Length in Inches	Est. Lbs. Per Sq. Ft.	Approx. Size of Opening in Inches SWO LWO
1/2 - .051	48	96	.26	.312 x 1.00
1/2 - .081	48	96	.42	.312 x 1.00
3/4 - .051 . . . . .	48 . . . . .	96 . . . . .	.16	.750 x 1.81
3/4 - .081 Heavy	48	96	.39	.687 x 1.75
3/4 - .125	48	96	.62	.625 x 1.75

## MORTON SAFETY PRODUCTS

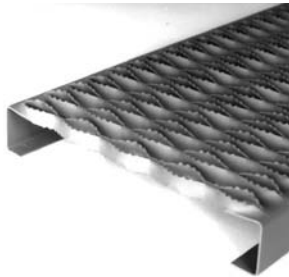
Designed to meet Federal Spec. RR-G-1602C

### DECK SPAN® and GRIP-TRAC® PLANKS

Stock Lengths: 10 Ft. and 12 Ft.

#### DECK SPAN® Pre-Galvanized Steel\*

Gage x Width & Depth	Weight Per Lineal Ft. in Lbs.
14 Ga. x 4 <sup>3</sup> / <sub>4</sub> x 1 <sup>1</sup> / <sub>2</sub>	2.30
14 Ga. x 7 x 1 <sup>1</sup> / <sub>2</sub>	3.00
14 Ga. x 9 <sup>1</sup> / <sub>2</sub> x 1 <sup>1</sup> / <sub>2</sub>	3.60
14 Ga. x 11 <sup>3</sup> / <sub>4</sub> x 1 <sup>1</sup> / <sub>2</sub>	4.40
14 Ga. x 18 <sup>3</sup> / <sub>4</sub> x 1 <sup>1</sup> / <sub>2</sub>	6.10
14 Ga. x 4 <sup>3</sup> / <sub>4</sub> x 2	2.60
14 Ga. x 7 x 2	3.20
14 Ga. x 9 <sup>1</sup> / <sub>2</sub> x 2	3.80
14 Ga. x 11 <sup>3</sup> / <sub>4</sub> x 2	4.40
14 Ga. x 18 <sup>3</sup> / <sub>4</sub> x 2	6.30
12 Ga. x 4 <sup>3</sup> / <sub>4</sub> x 1 <sup>1</sup> / <sub>2</sub>	3.20
12 Ga. x 7 x 1 <sup>1</sup> / <sub>2</sub>	4.10
12 Ga. x 9 <sup>1</sup> / <sub>2</sub> x 1 <sup>1</sup> / <sub>2</sub>	5.00
12 Ga. x 11 <sup>3</sup> / <sub>4</sub> x 1 <sup>1</sup> / <sub>2</sub>	5.90
12 Ga. x 18 <sup>3</sup> / <sub>4</sub> x 1 <sup>1</sup> / <sub>2</sub>	8.50
12 Ga. x 4 <sup>3</sup> / <sub>4</sub> x 2	3.60
12 Ga. x 7 x 2	4.50
12 Ga. x 9 <sup>1</sup> / <sub>2</sub> x 2	5.40
12 Ga. x 11 <sup>3</sup> / <sub>4</sub> x 2	6.20
12 Ga. x 18 <sup>3</sup> / <sub>4</sub> x 2	8.90
12 Ga. x 24 x 2	10.40



#### GRIP-TRAC® Aluminum 5052-H32

Gage x Width & Depth	Weight Per Lineal Ft. in Lbs.
.080 x 4 <sup>3</sup> / <sub>4</sub> x 2	.90
.080 x 7 x 2	1.20
.080 x 9 <sup>1</sup> / <sub>2</sub> x 2	1.40
.080 x 11 <sup>3</sup> / <sub>4</sub> x 2	1.60
.100 x 4 <sup>3</sup> / <sub>4</sub> x 2	1.20
.100 x 7 x 2	1.50
.100 x 9 <sup>1</sup> / <sub>2</sub> x 2	1.70
.100 x 11 <sup>3</sup> / <sub>4</sub> x 2	2.00
.100 x 18 <sup>3</sup> / <sub>4</sub> x 2	2.80

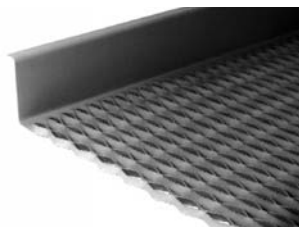
\*Also available as Hot Rolled Pickled & Oiled Steel, and as 16 Ga. T304 & T316L Stainless Steel 9<sup>1</sup>/<sub>2</sub>" wide & 11<sup>3</sup>/<sub>4</sub>" wide x 2" deep

#### GRIP-TRAC® WALKWAY Pre-Galvanized Steel\*

Stock Lengths: 10 Ft. and 12 Ft.

Gage	Width	Toeboard Height	Weight Per Lineal Ft. in Lbs.
#14	24"	4 <sup>1</sup> / <sub>2</sub> "	8.90
#12	24"	4 <sup>1</sup> / <sub>2</sub> "	12.50

\*Also available as Hot Rolled Pickled & Oiled Steel



## MORTON SAFETY PRODUCTS

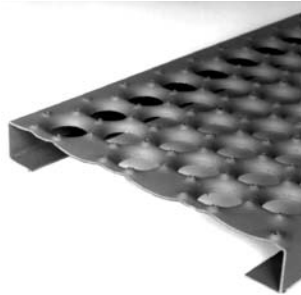
Designed to meet Federal Spec. RR-G-1602C

### OPEN-GRIP® PLANKS

Stock Lengths: 10 Ft. and 12 Ft.

#### Pre-Galvanized Steel\*

Gage x Width & Depth	Weight Per Lineal Ft. in Lbs.
<b>13 Ga. x 5 x 1½</b>	2.56
<b>13 Ga. x 7 x 1½</b>	3.25
<b>13 Ga. x 10 x 1½</b>	4.02
<b>13 Ga. x 12 x 1½</b>	4.40
<b>13 Ga. x 18 x 1½</b>	5.63
<b>13 Ga. x 5 x 2</b>	2.87
<b>13 Ga. x 7 x 2</b>	3.25
<b>13 Ga. x 10 x 2</b>	4.02
<b>13 Ga. x 12 x 2</b>	4.40
<b>13 Ga. x 18 x 2</b>	5.63



<b>11 Ga. x 5 x 1½</b>	3.41
<b>11 Ga. x 7 x 1½</b>	4.33
<b>11 Ga. x 10 x 1½</b>	5.36
<b>11 Ga. x 12 x 1½</b>	5.87
<b>11 Ga. x 18 x 1½</b>	7.51
<b>11 Ga. x 5 x 2</b>	3.83
<b>11 Ga. x 7 x 2</b>	4.33
<b>11 Ga. x 10 x 2</b>	5.36
<b>11 Ga. x 12 x 2</b>	5.87
<b>11 Ga. x 18 x 2</b>	7.51

#### Aluminum 5052-H32

Gage x Width & Depth	Weight Per Lineal Ft. in Lbs.
<b>.125 x 5 x 2</b>	1.36
<b>.125 x 7 x 2</b>	1.55
<b>.125 x 10 x 2</b>	1.91
<b>.125 x 12 x 2</b>	2.09
<b>.125 x 18 x 2</b>	2.67

\*Also available as Hot Rolled Pickled and Oiled Steel

### OPEN-GRIP® WALKWAY

#### Pre-Galvanized Steel\*

Stock Lengths: 10 Ft. and 12 Ft.

Gage	Width	Toeboard Height	Weight Per Lineal Ft. in Lbs.
<b>#13</b>	24"	5"	9.25
<b>#13</b>	30"	5"	10.63
<b>#11</b>	24"	5"	12.33
<b>#11</b>	30"	5"	14.17
<b>#11</b>	36"	5"	15.94



\*Also available as Hot Rolled Pickled & Oiled Steel

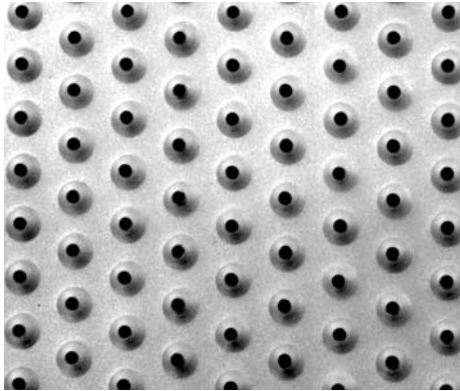
---

## MORTON SAFETY PRODUCTS

Designed to meet Federal Spec. RR-G-1602C

### TREAD-GRIP® SHEETS Hot Rolled Pickled and Oiled\*

---



A permanent, non-skid surface for positive gripping action on steps and walkways. Made of mild steel.

Size in Inches	Lbs. Sq. Ft.	Est. Lbs. Per Sht.
<b>16 Ga. x 36 x 120</b>	2.40	72.0
<b>13 Ga. x 36 x 120</b>	3.61	108.3
<b>11 Ga. x 36 x 120</b>	4.81	144.3

\*Also available as Pre-Galvanized Steel, .125" thick Aluminum 5052-H32, and 16 Ga. T304 2B Stainless Steel

### TREAD-GRIP® LADDER RUNGS Hot Rolled Pickled and Oiled\*



Size in Inches	Type	Est. Lbs. Per Rung
<b>13 Ga. x 1<sup>5</sup>/<sub>8</sub> x 48<sup>3</sup>/<sub>4</sub></b> . . . . .	3 Row . . . . .	4.0
<b>13 Ga. x 2<sup>1</sup>/<sub>4</sub> x 48<sup>3</sup>/<sub>4</sub></b> . . . . .	4 Row . . . . .	6.3

\*Also available as Pre-Galvanized Steel, .125" thick Aluminum 5052-H32, and 16 Ga. T304 2B Stainless Steel